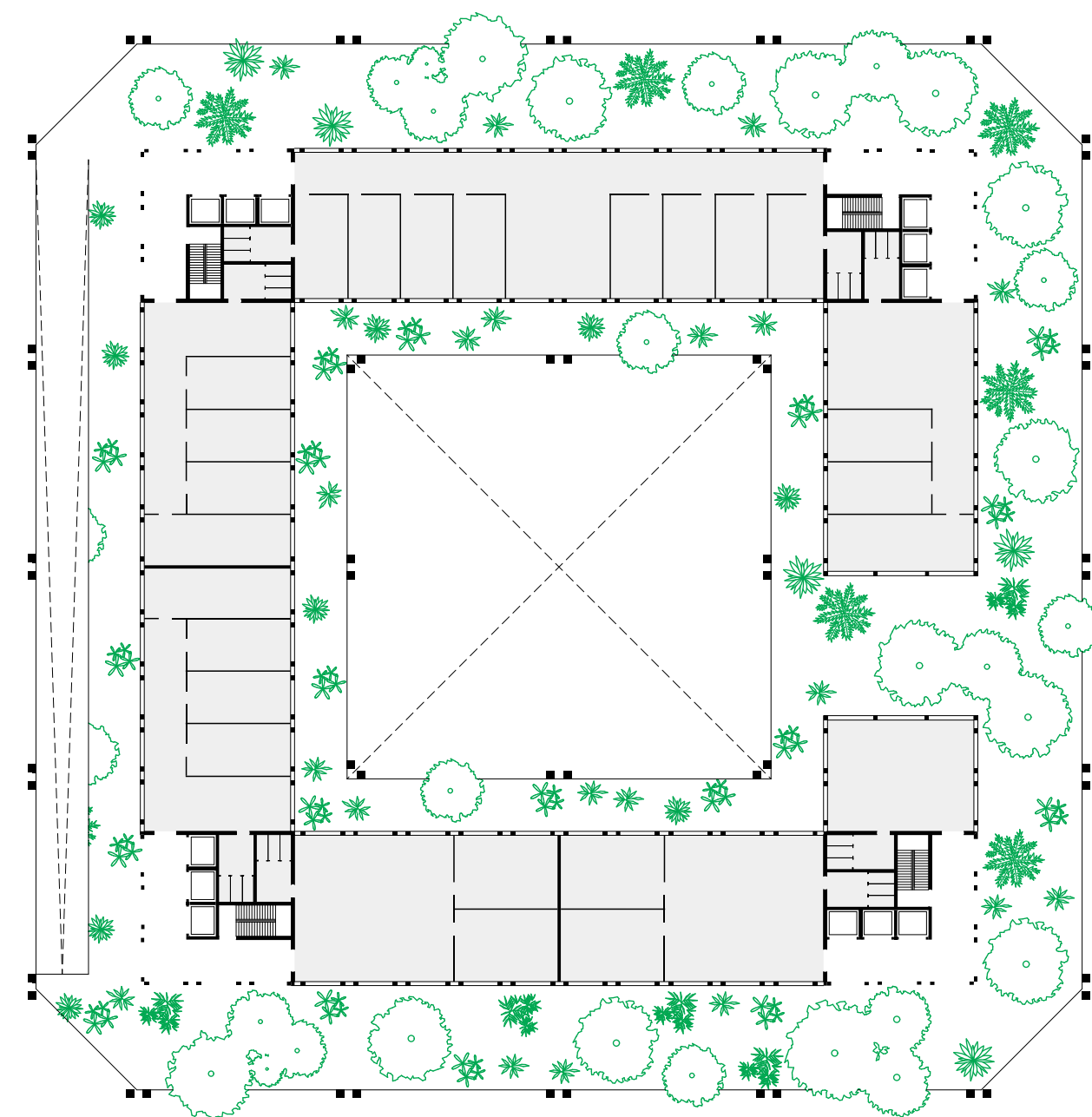


Ground Floor
1-500



21st Floor
1-500

The structure of the building

The load-bearing structure of the building is an external timber framework. It consists of interlocked, almost 80cm thick wooden columns. The building has an inner courtyard that functions as a chimney. In the inside of the courtyard there is the same load-bearing structure as on the outer skin. There are also four supporting cores in the four corners of the square floor plan. The façade, which separates the cold from the warm room, is supported by a smaller and more filigree wooden framework. Furthermore there are view holes in the structure, where light comes into the courtyard.

58 Floors
260 Meter Height
80 x 80 Meter Footprint

120000 qm Space
2000 qm per Floor

62000 qm Office
22000 qm Food and Retail
12000 qm Business Center
16000 qm Sustainability Museum
8000 qm Executive Officer

Buffer zones and chimney effect

Between the external and load-bearing structure of the building and the actual façade there is an eight metre deep buffer zone, which is densely planted. The planting largely shades the actual glass façade and keeps it cool as far as possible. The plants also cool passively. The courtyard of the building functions as a cooling fireplace. As the foyer is open, the artificial pond in the courtyard and the openings in the sides and at the top of the building create a classic chimney effect. The building is thus passively cooled from the outside and especially from the inside. Furthermore, the offices are mainly oriented inwards, i.e. towards the courtyard. This keeps them in the shade.