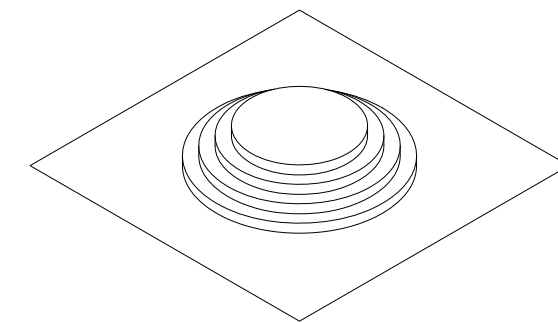
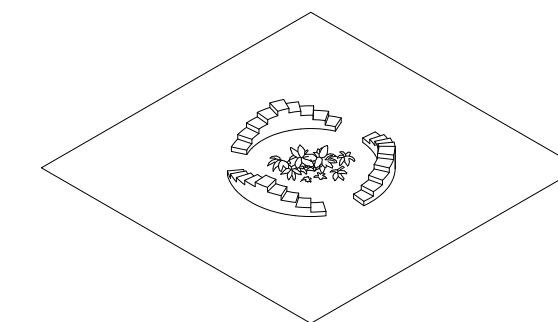


Pond



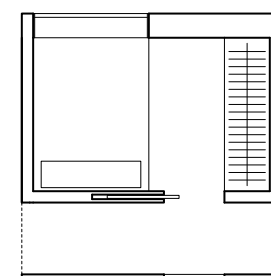
Stage



Garden

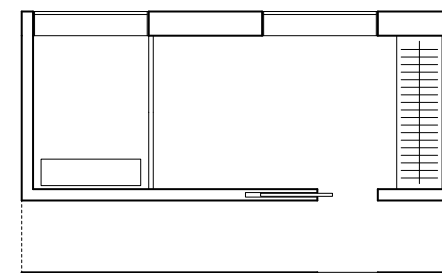
Communal square

The communal square is located at the intersection of the pedestrianised streets. The distinct modules gives the community a specific identity, as well as providing a meeting and gathering point.



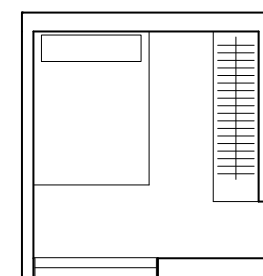
Family apartment

Smaller bedrooms, more common space



Sharehouse

Larger bedrooms, less common space



Elderly apartment

Apartment configuration

The configuration of the apartments depends on the residents. The diversity of the residents is representative of a genuine approach to housing affordability as a goal which must include everyone, not just families.



Materiality

The materiality of the scheme is cheap, durable and distinctly Australian.

The external walls are unfinished corrugated iron, with plain silver louvres. The exterior consonance of the terraces is inspired by the charming harmony of traditional terraces in Sydney.

The scheme's interior materiality is purposely ambiguous, as it is open to resident's customisation. Planting in the pedestrianised areas is encouraged.