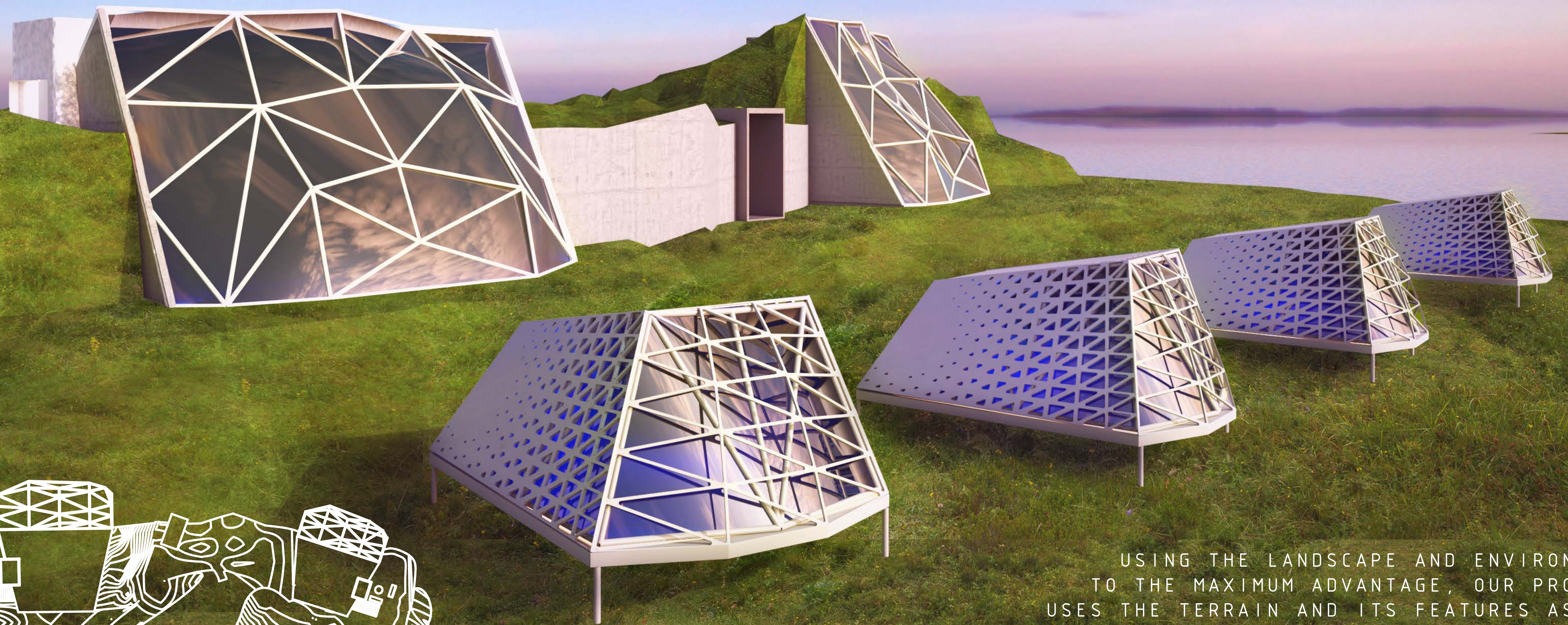
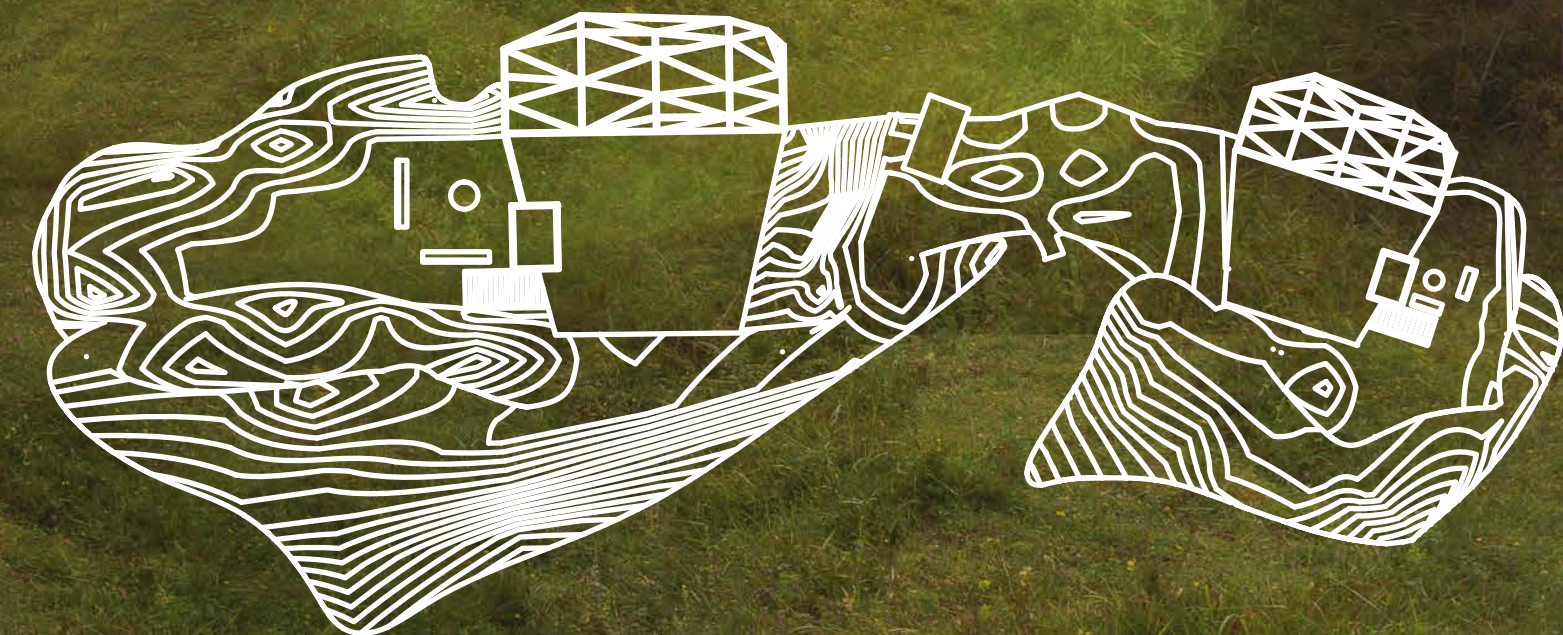


# ICELAND NORTHERN LIGHTS



PLAN



USING THE LANDSCAPE AND ENVIRONMENT TO THE MAXIMUM ADVANTAGE, OUR PROJECT USES THE TERRAIN AND ITS FEATURES AS THE DRIVING FORCE OF THE DESIGN. BURYING THE PROGRAM IN THE GROUND AND ADDING CENTRAL CHIMNEYS ALLOWS FOR REGULATION OF TEMPERATURE TO AVOID DEPENDANCE ON ELECTRICITY FOR HEAT. ADDITIONALLY, THE PARAMETRICALLY DESIGNED WINDOW FACADE TILTS BACKWARDS TO ALLOW FOR A GREATER VIEW OF THE SKY.