



The Loop Stop is a highly recognisable shelter and lodging along the European Velo Bike Route. The concept behind this design

is based on the most popular 1-loop bike rack. By using this module,

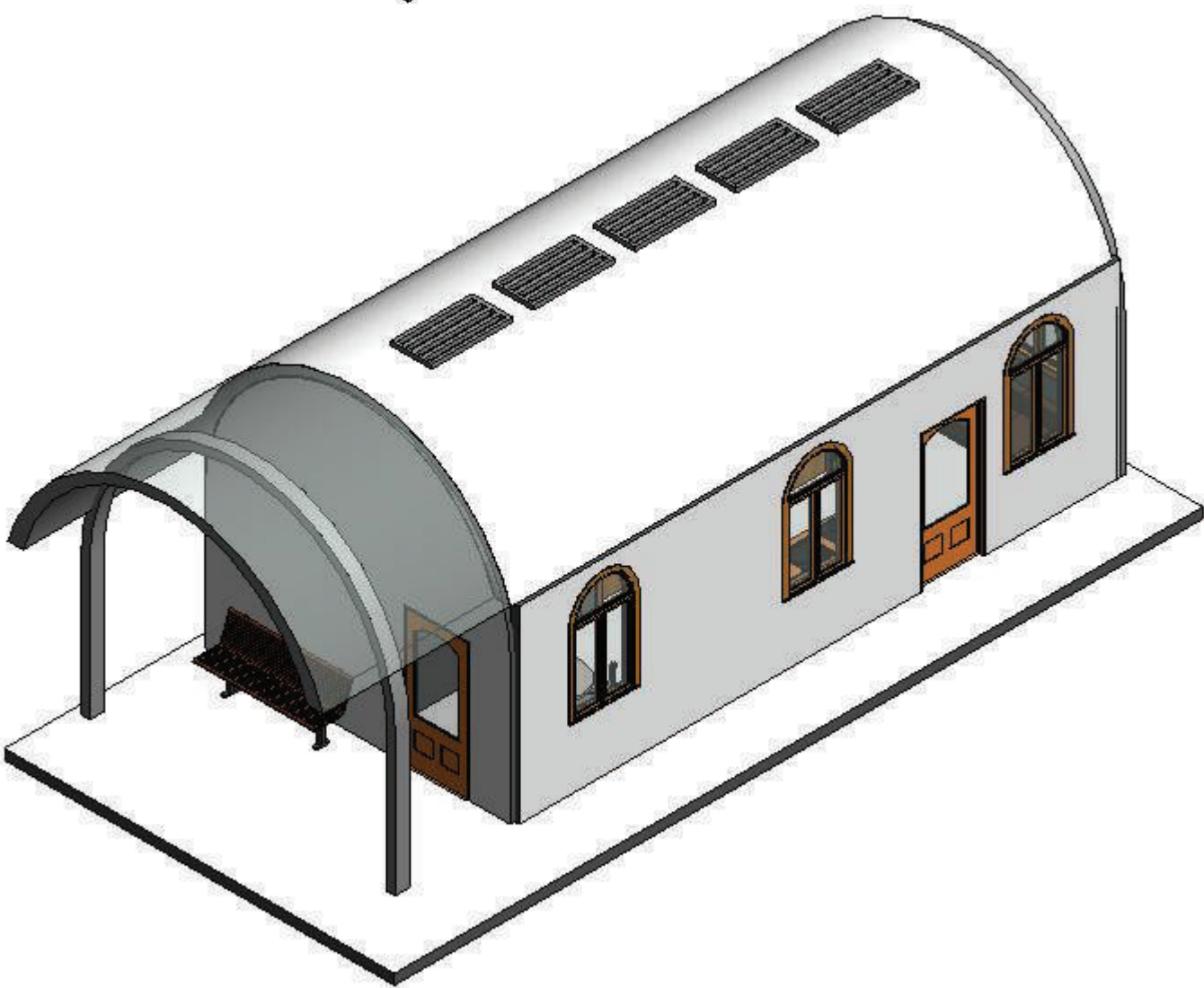
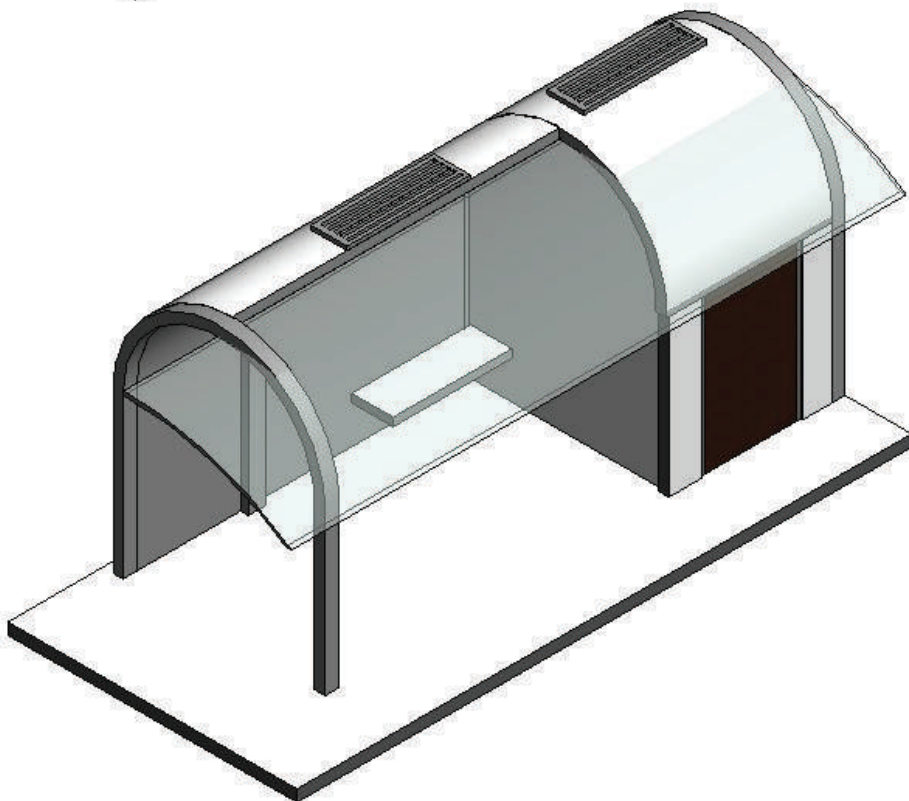
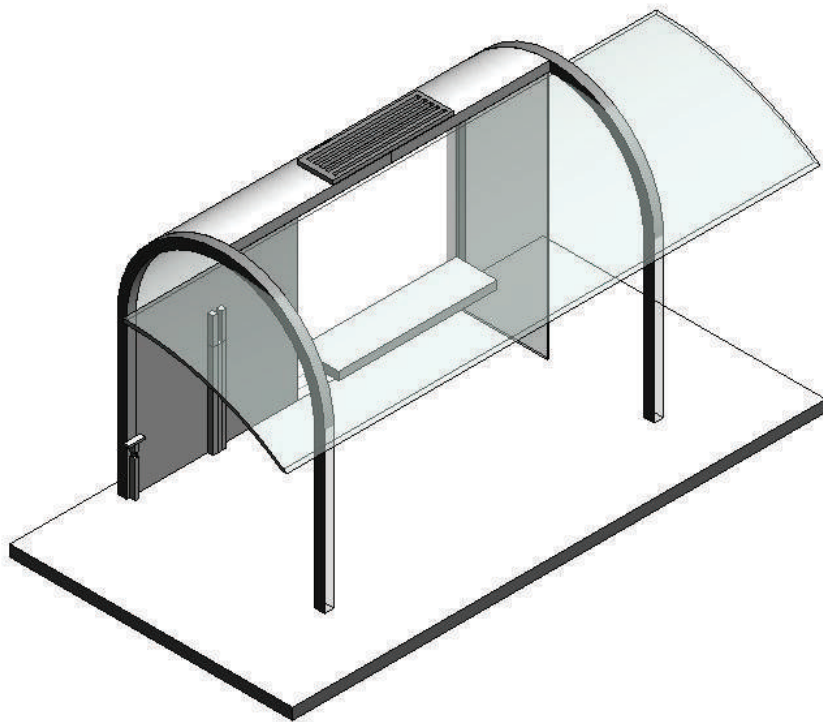
- * it signify the usage of the bike stop
- * it doubles as bike racks and as structural columns,
- * it protects the shelter and its occupant from way-ward vehicle,
- * its arch will stand out miles away for cyclists among regular roofs
- * its arch will rival other iconic arches and yet it is still in keeping with the context with its modified facades based on its surrounding

This module system is also highly adaptable as it can be modified into the basic bike stop, the bike stop with a restroom, and deluxe stop that includes a lodging for 4 people. All 3 stops feature no excavation, low maintenance and enery efficient elements.



Loop Bike Rack

3 Type of Loops



The Basic Loop:

- Bench
- Bike Racks
- Bike Air Pump
- Bike Repair Stand
- Solar Panel for 2 Lights

The Poop Loop:

- Bench
- Bike Rack
- Bike Air Pump
- Bike Repair Stand
- Solar Panels for 4 Lights
- Restroom with Compostable Toilet & Hand Sanitizer

The Loop Cabin:

- Bench
- Bike Rack
- Bike Air Pump
- Bike Repair Stand
- Solar Panels for 10 Lights
- Restroom with Compostable Toilet & Hand Sanitizer
- Shower Stall
- Kitchenette
- Living Room
- 2 Bedrooms