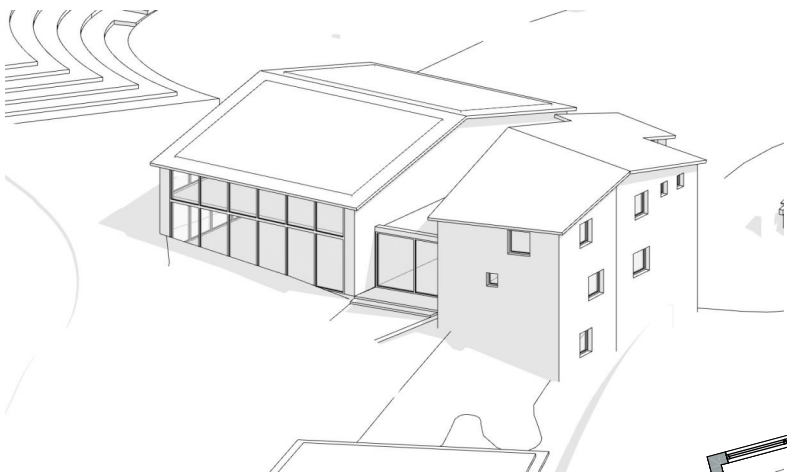
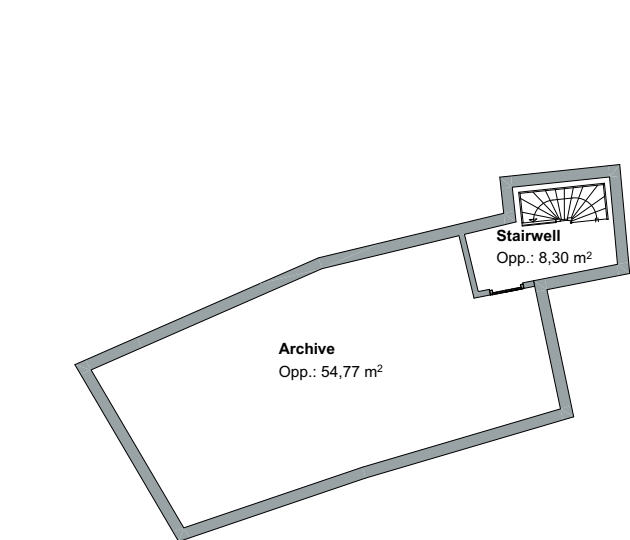


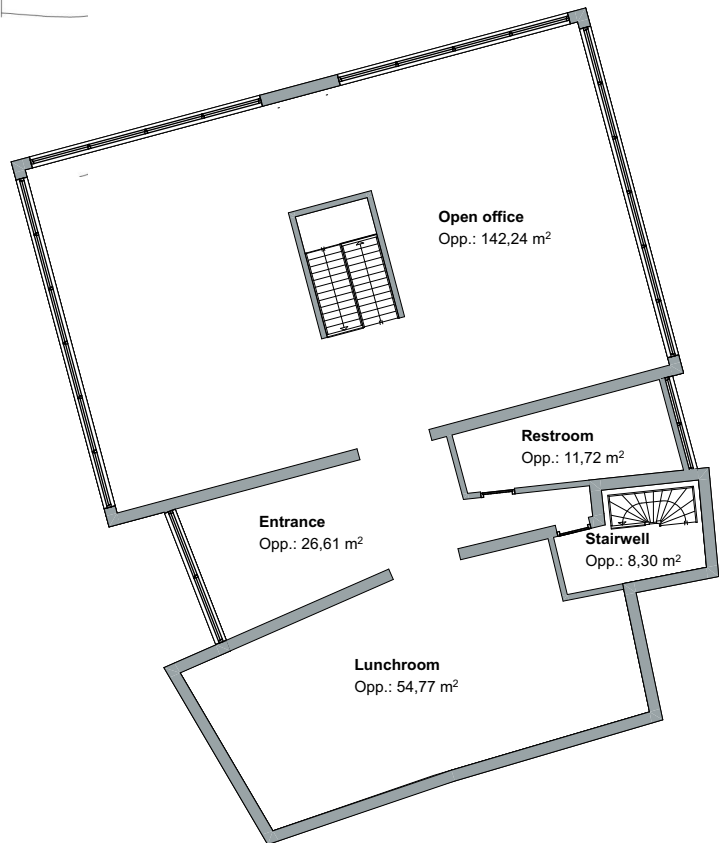
BUILDING 1



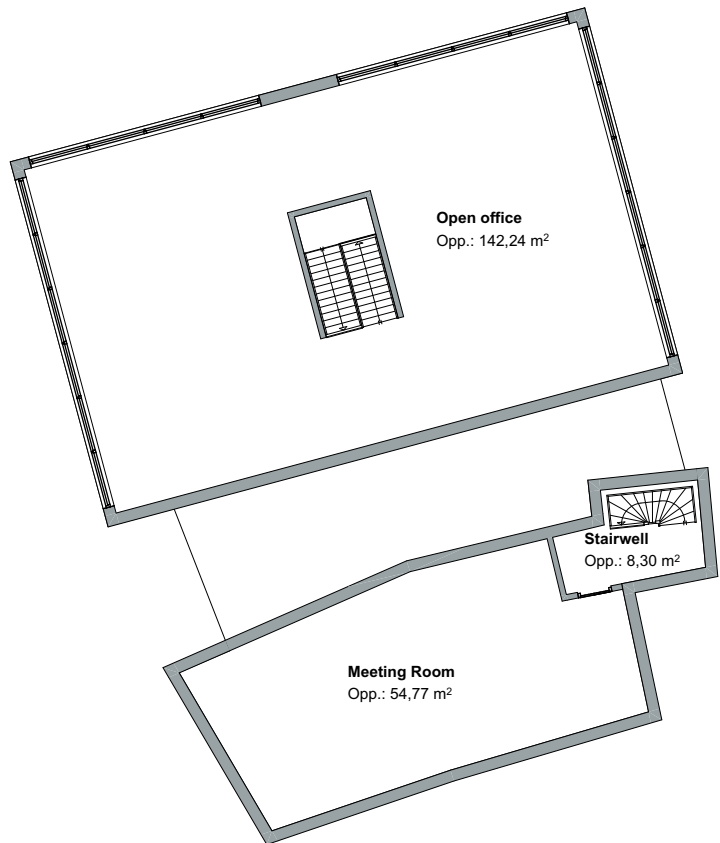
AXONOMETRY



BASEMENT  
1 : 200



GROUND FLOOR  
1 : 200



FIRST FLOOR  
1 : 200

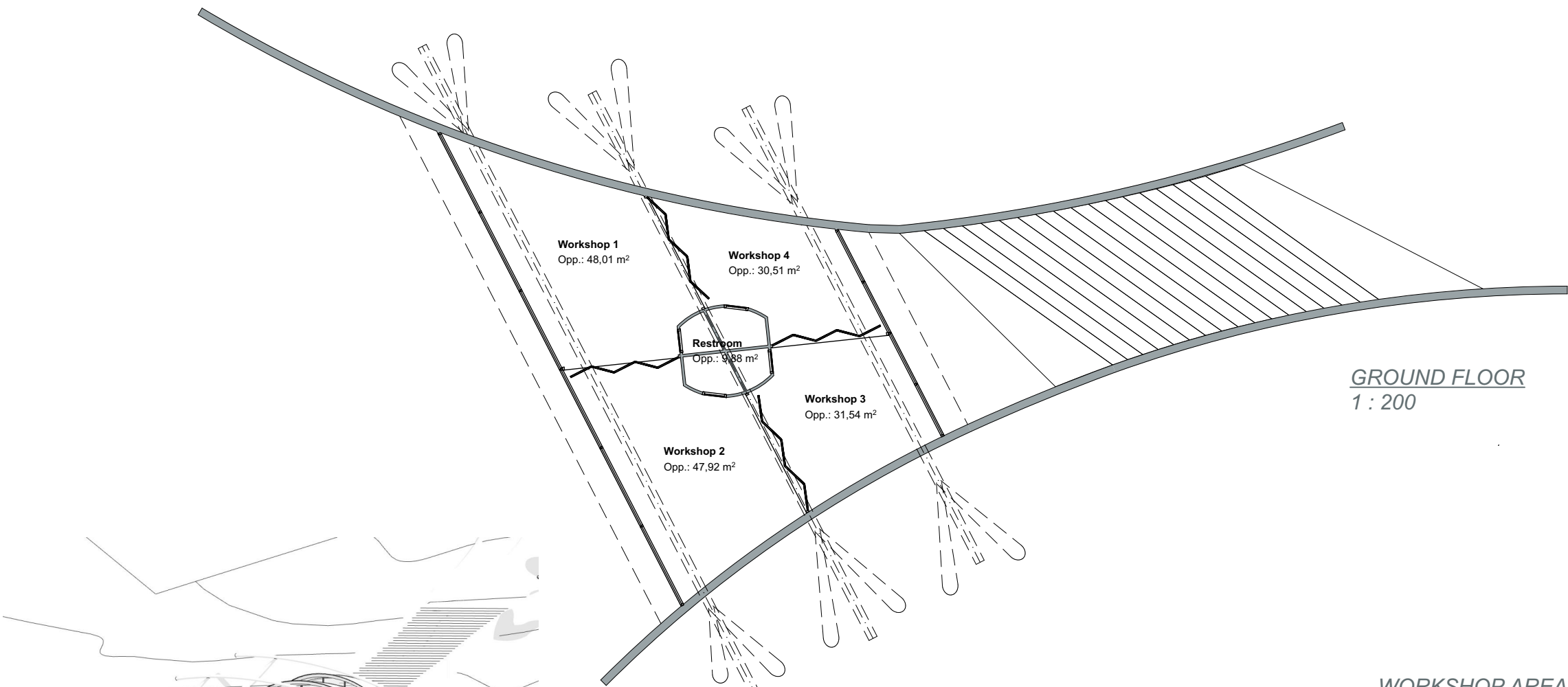
OFFICE SPACE  
*Imagine... Roots from the past, present in the here and now.  
In honor of wat was and always will be, the seed and center were it started.*

*This finca, beautifully placed in the middle of the project site as the beating heart.  
Creativity, creation and flow can thrive... Guided through subtle borders.*

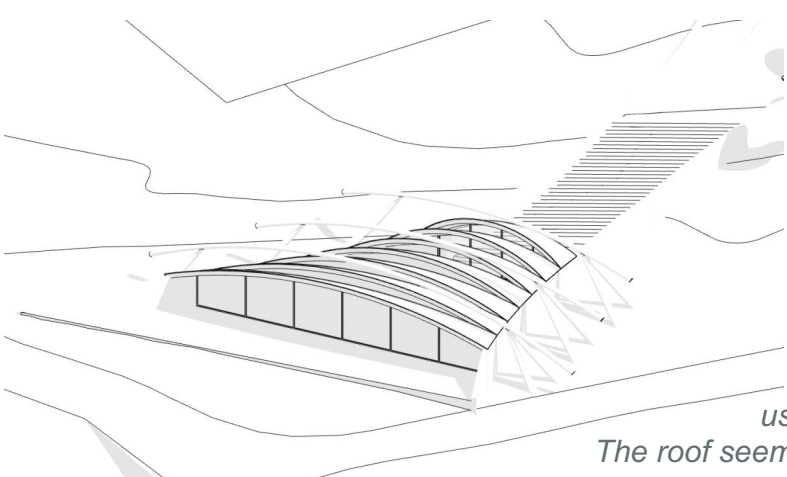
*These borders are strong (stone), transparant (glass) and merging with it's surroundings.  
Using the same shape but in contrast form old (original renovated finca) to new, and into a sustainable future (solar panels), sturdy but open.*



BUILDING 2



GROUND FLOOR  
1 : 200



AXONOMETRY

WORKSHOP AREA  
*In flow with the landscape, as creativity flows whitin us.  
Using what the earth gives us, absorbing the sun power which is energysing us all.*

*Designed by using concrete and locally provided sandstone. The use of glass and solar panels let us use the maximum power of the sun. The created roof shape with scales like a fish, let light in and gives shelter. The roof seems to hang form the strong skelet, enriched with mosaic, as the stron backbone and safe base for al creativity.*

*All spaces are dynamic and can decrease or increase in size when needed. As living beeing, adjusting to nature.*

