



# PERISTYLIUM | The Atrium & outdoor spaces

The proposal focuses on a series of carefully planned outdoor spaces designed to be activated at different times of the day and in different seasons.

Your arrival is through a portico that frames the pool and the ruins. Immediately on arrival, as with the Etruscan House, are the bar and the shop.

The circulation loops around the central atrium but breaks tradition as it approaches the Barn. Subsuming it into the Barn forces visitors to interact with it as part of their journey around the atrium.

The Peristyle steps in from the atrium. We reimagine the impluvium as a rain garden with attenuation tanks for greywater uses in the void between the two.

Part of the peristyle is landscaped with low-level planting and a new tree at its centre to shade the Barn. The pool gives the space a focus and affords respite in the summer heat.

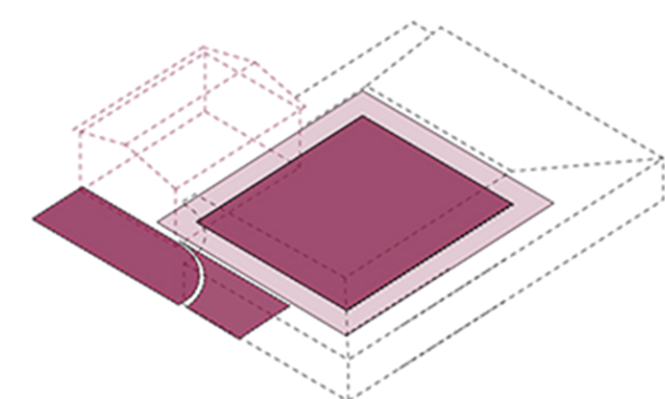
To the west, framing views of the Vineyards is the evening terrace. Under the roof is a covered space with a hearth for when the nights draw in.

The compluvium roof is cut back with a sweeping curve. This gesture reinforces the dominance of the Barn in the programme by making a different connection with it.

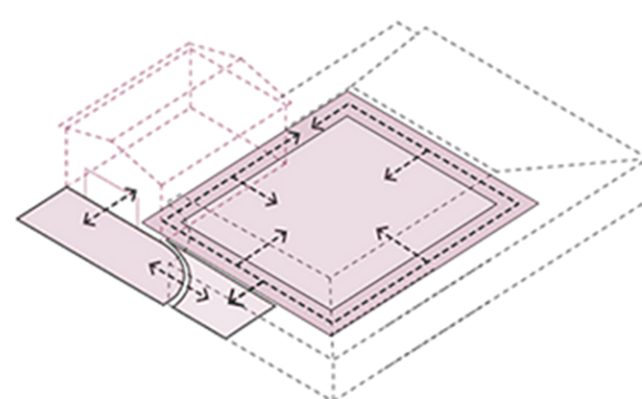
The evening terrace continues outside the roof. This gesture defines the perimeter of the Etruscan house and connects the bar to the vineyard with its own outdoor space.



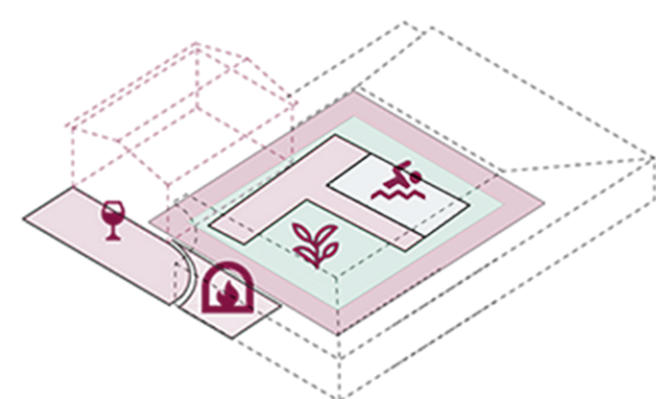
Shading and crossed-ventilation



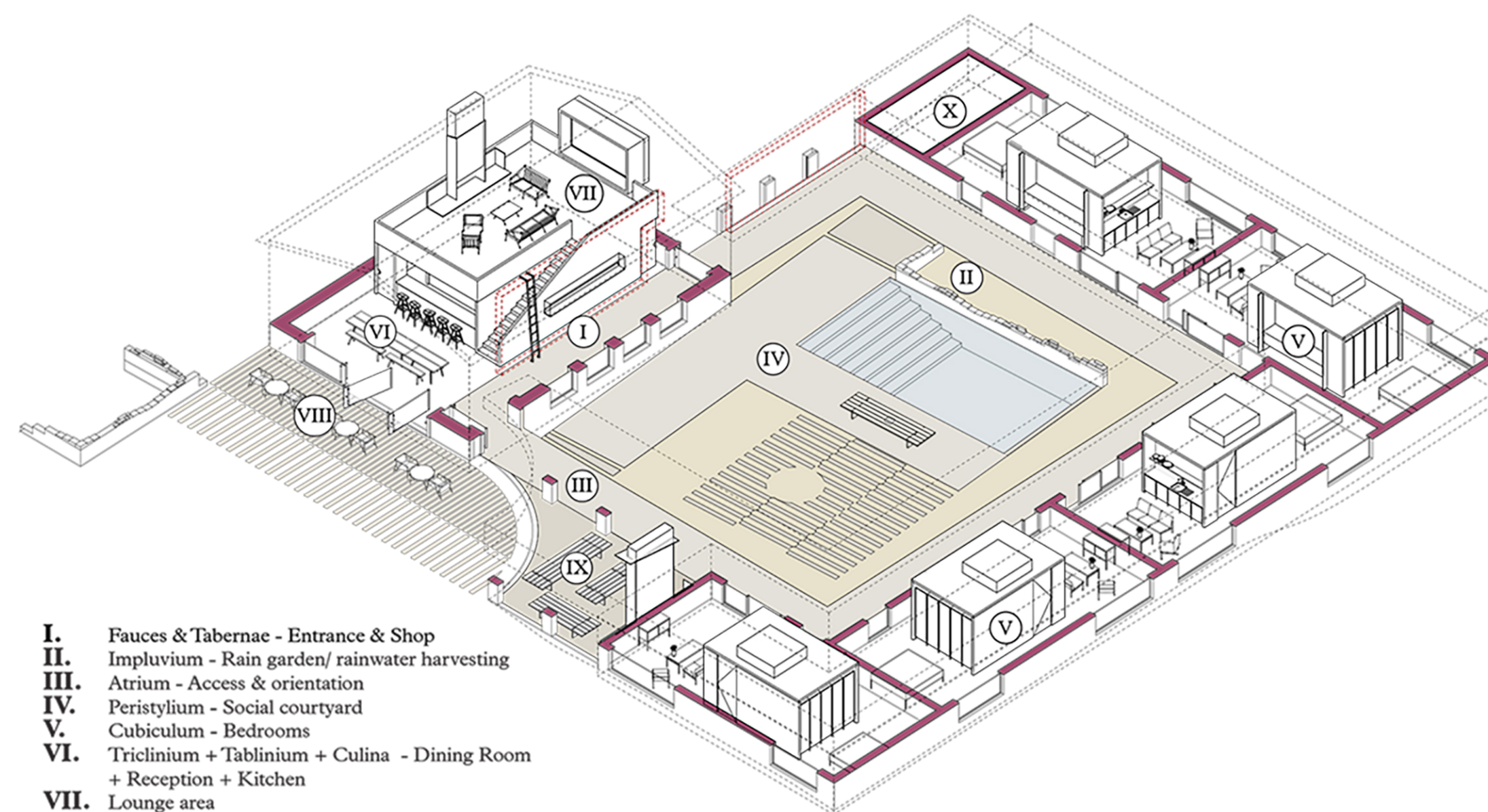
**Location**  
The Barn & Proportion



**Connections**  
Physical and visual connections along the atrium



**Atrium Outdoor Programme**  
Activity in the space



- I.** Fauces & Tabernae - Entrance & Shop
- II.** Impluvium - Rain garden/ rainwater harvesting
- III.** Atrium - Access & orientation
- IV.** Peristylum - Social courtyard
- V.** Cubiculum - Bedrooms
- VI.** Triclinium + Tablinum + Culina - Dining Room + Reception + Kitchen
- VII.** Lounge area
- VIII.** Outdoor Dining
- IX.** Covered lounge area
- X.** Plantroom

