



The Charred Cabin

The design for a meditation and acupuncture cabin, combines an innovative spatial concept with a robust approach to meeting the adequate space to accommodate a single guest and therapist. It achieves this by creating an open plan with a flexible layout that alters based on the type of session. By keeping the external form simple, the design is able to achieve a dynamic and simple spatial arrangement within the interior.

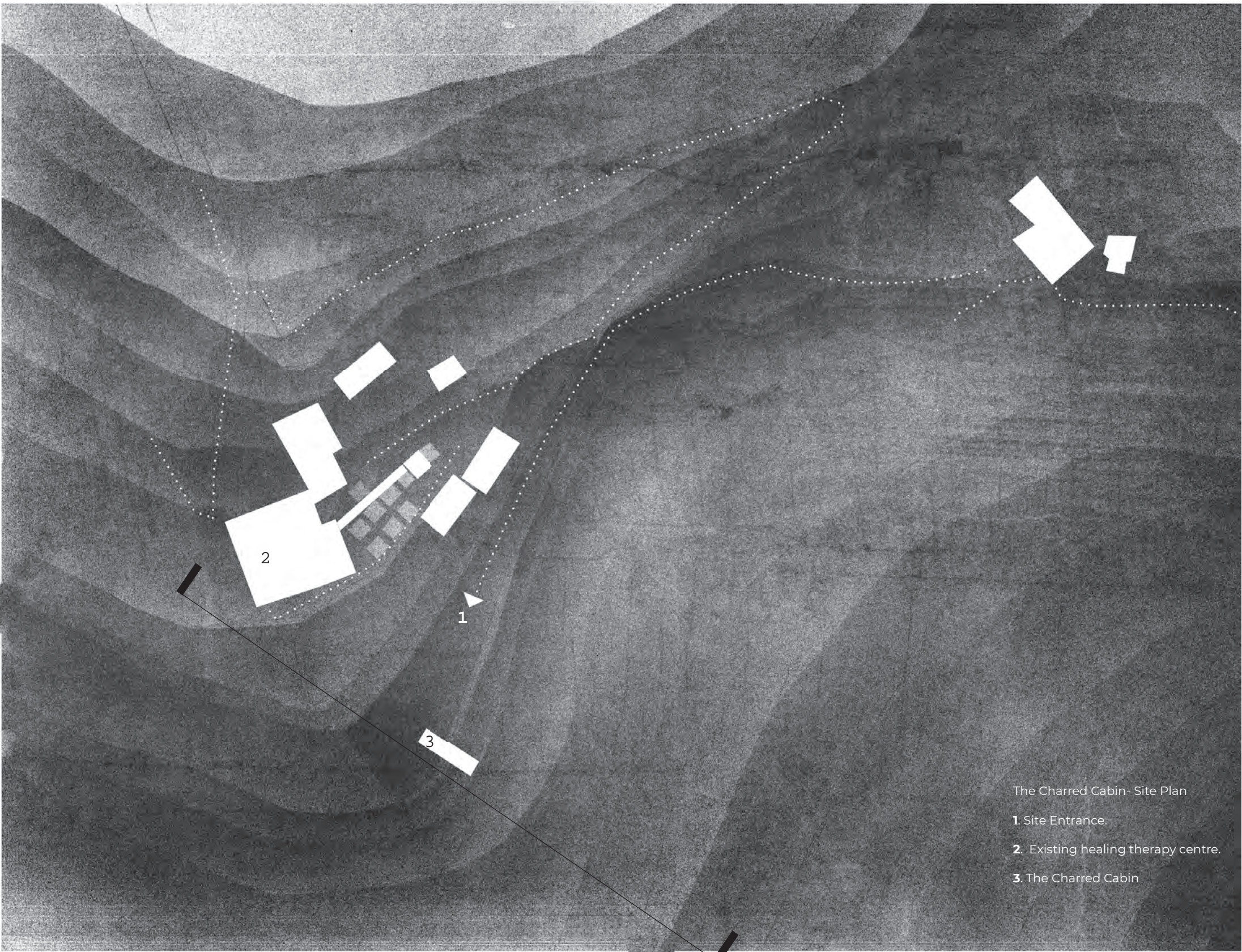
The meditation and acupuncture treatment space enjoys direct and slanted views over the river and beyond towards a hilly landscape.

The cabin is arranged facing south west. This allows two principle orientations to be exploited – south maximising winter sunlight and West towards the opposite hills which offer a spectacular dawn. To extend the cabin into the landscape and its unique setting, a timber super structure extends into timber “stilts” towards the slope “hanging” the cabin into the nature. This framing device also wraps around the cabin as an exoskeleton.

Flexibility and adaptability has been built into the design. For example the main storage space is within the floor, this maximises the interior space of the cabin. The design is also capable of being delivered with a green roof which enables it to blend into the surrounding nature when seen from above. The cabin is designed to create comfortable conditions throughout the seasons. Natural ventilation is exploited in summer whilst a Japanese style internal fire pit provides heat in the cold seasons. Other sustainability measures include good daylight factor, efficient water usage through a rain water storage tank placed at the bottom of the cabin. The Charred cabin can be built with basic techniques using basic and non electrical tools. The charred cabin takes the name from the charred cladding it features.

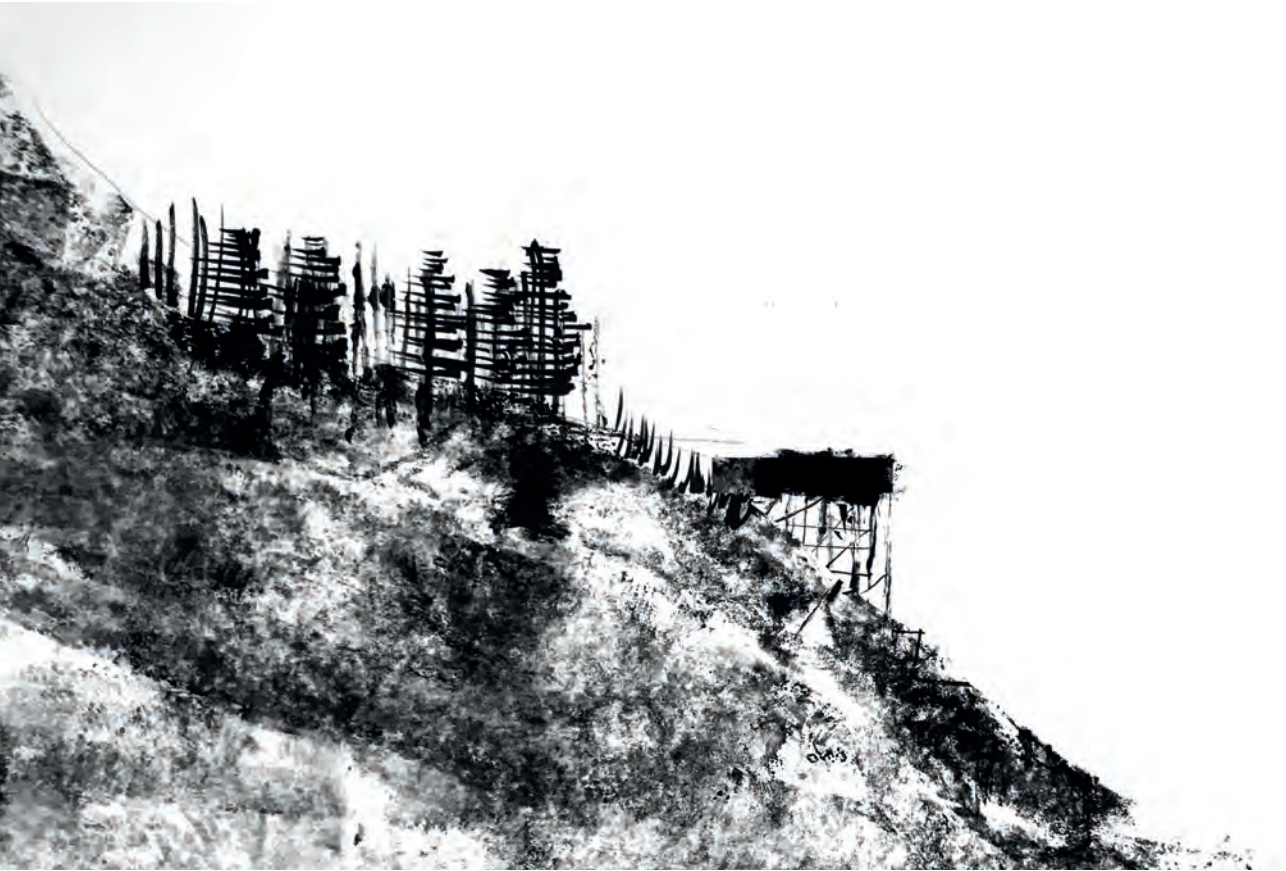
The timber tectonic of the cabin structure aims to echo the surrounding pine forest.

External view of the proposed cabin

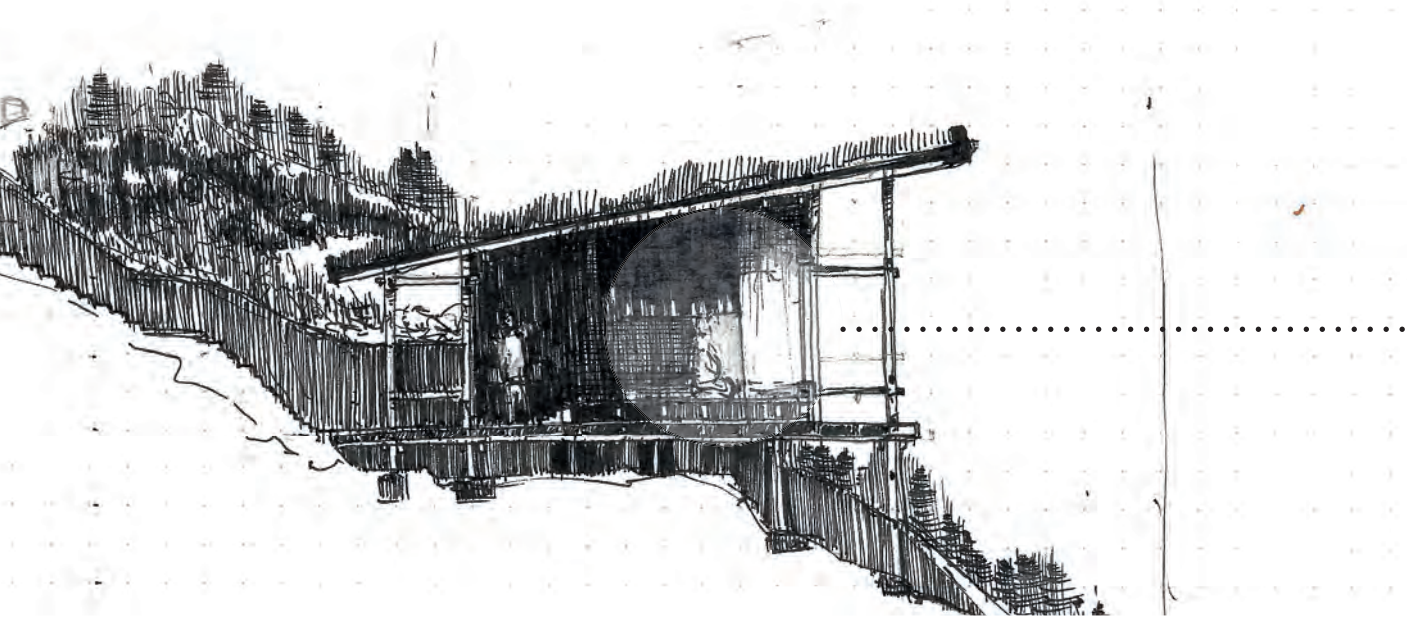


Site Plan [1:1250]

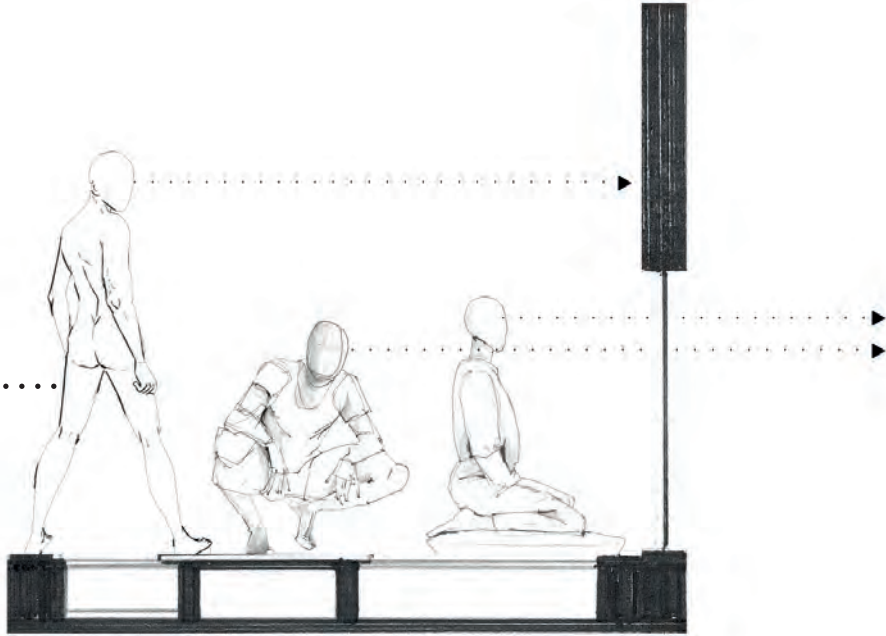
- The Charred Cabin- Site Plan
- 1. Site Entrance
 - 2. Existing healing therapy centre.
 - 3. The Charred Cabin



Design concept sketch drawing, expressing emphasis on a light weight structure and forest mimicry. The proposed Architecture aims at blending with the surrounding nature instead of the existing town which predominantly uses Stone, Clay and Concrete. A new lightweight/ flexible Architectural typology, attempts to fit loosely within the context.



Design concept sketch drawing, exploring “blending” with the landscape



Low windows invite the guests to submit to the views towards the surrounding landscape. The low windows also block the direct sunlight from overheating the cabin in the summer period, yet absorbing much of the weak winter light.