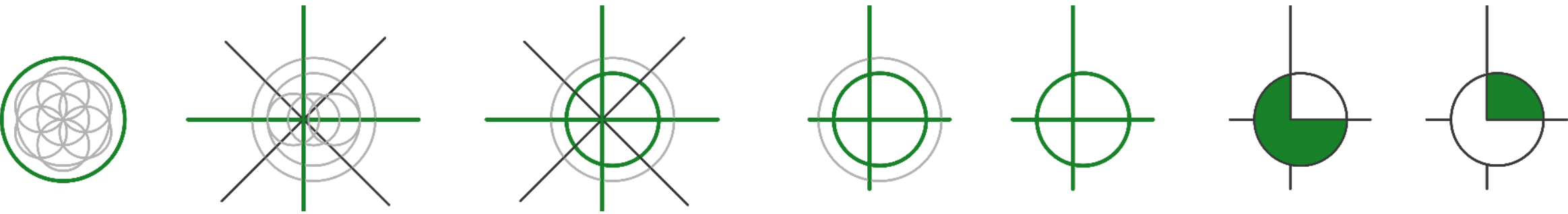


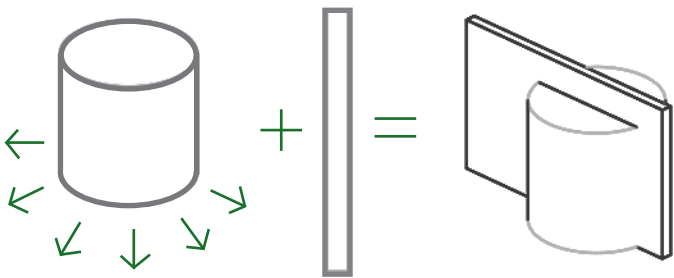
Design process

The circle has no beginning or end and all its points are equidistant from the center. This figure symbolically expresses the meaning of human life and the universe.

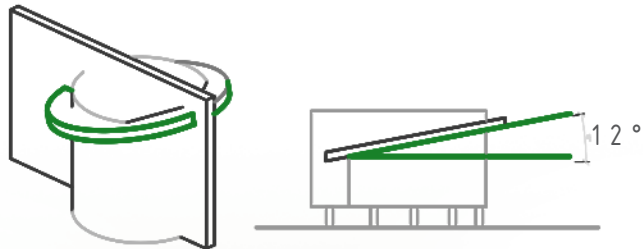


This is why the circle is the starting point of this proposal. Joined with two intersecting axes, representing north, south, east, and west. The main axis points north, and is offset from the center to generate asymmetric spaces. The cylindrical shape allows us to relate to the outside and contemplate the enviroment. The cabin adapts to the terrain, it is non-invasive and its shape integrates it into the landscape.

Shapes, axes and views:

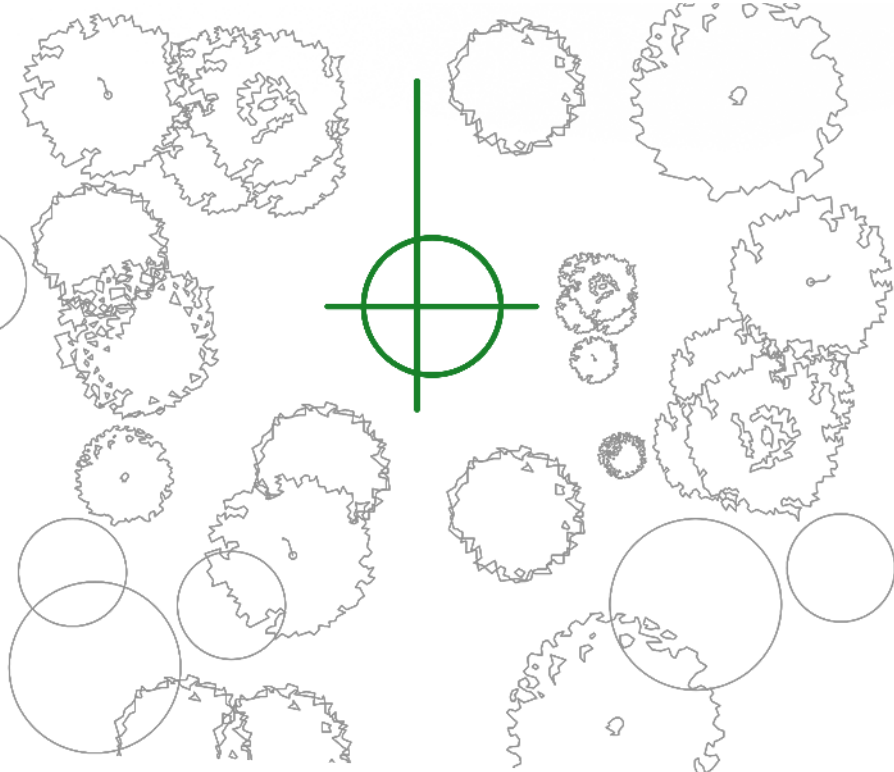


Roof slope 12 degrees to the south and possibility of being a green roof (not habitable).

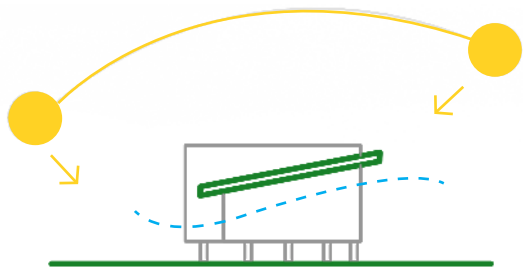


Placement:

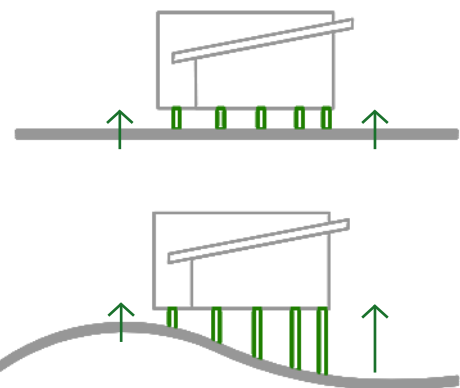
An element that is part of the landscape.



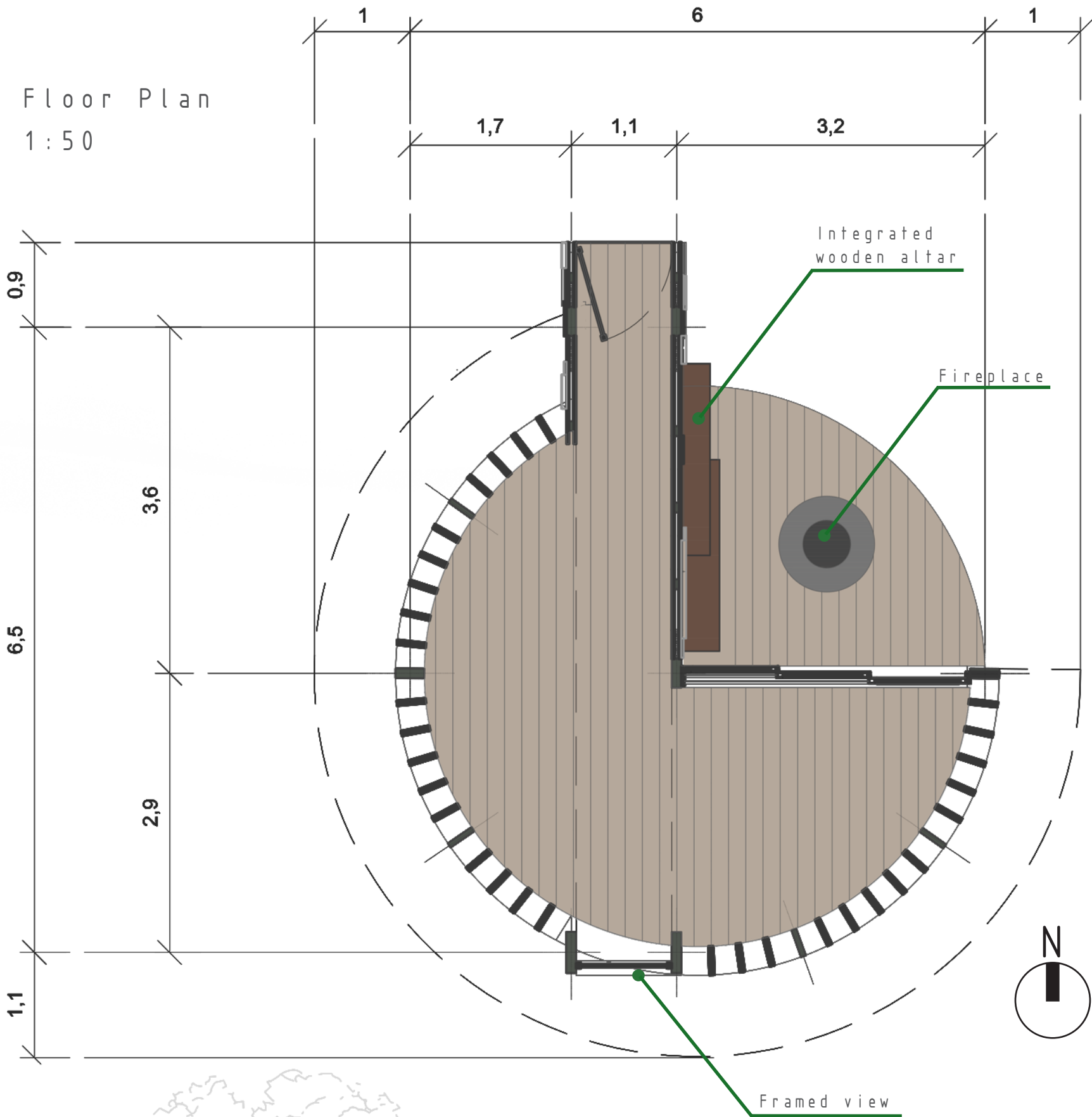
Enviroment:



Natural light, natural ventilation, sun protection and adaptability to the terrain.



Floor Plan
1:50



Facades
1:50

North

West

South

