

Location



A home for a comical couple

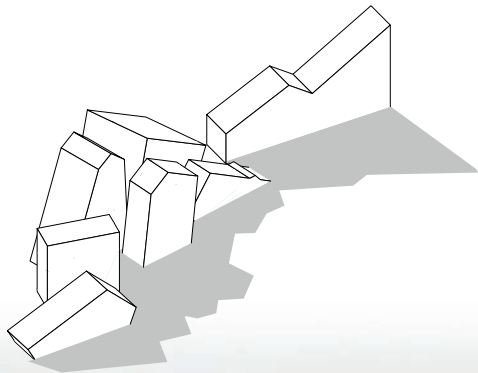
In this design case, the hypothetical couple is a cowboy from a comic book series; A cowboy who's faster than his own shadow with his loyal horse and their pet dog.

This two-faced villa is hiding a lot of secrets. The house seems a piece of land art in the sandy dunes but holds a series of interesting spaces underneath the surface and literally projects two faces in the shadow at a certain time of day; A home literally formed by shadows. The windows and spaces in the house are placed in a way they align with daily habits, considering time of day and the place of the sun in the sky to optimally use the natural light.

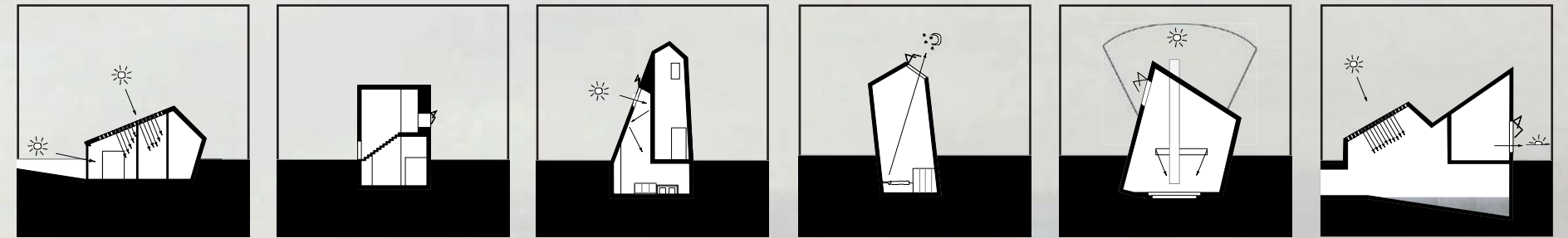
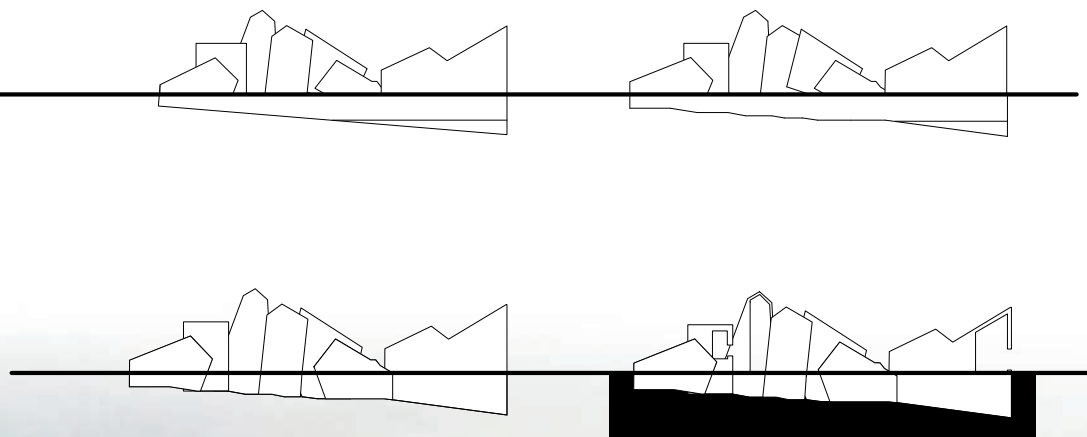
The day starts at the entrance of the house on the East side where the morning sun projects a long shadow where The cowboy can practice his shooting, then breakfast can be made in the kitchen where the warm morning light reflects on the corten steel wall for a soft morning light. At the end of the morning it's time for a game of chess where indirect sunlight softly fills the whole room for a evenly lit chess board. During midday the living room receives light from the long narrow window that follows the path of the sun. At the end of the day the view from the room in the West encloses the sunset. When the night falls and it's time for bed, a star gazing window offers stunning views on the moon and starry night.

Underground, all spaces are connected by one straight hallway which represents the 'one shot' the cowboy needs to silence his enemies. Along the hallway you'll find the different spaces with altenating heights that create visual boundaries between the spaces.

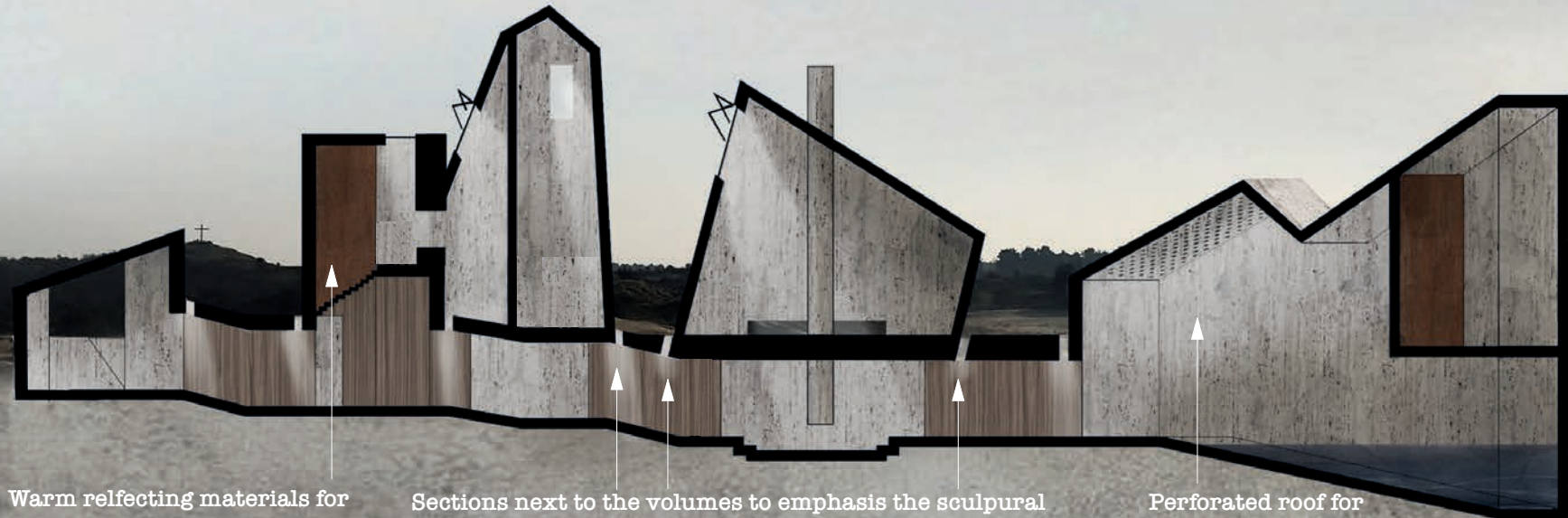
Shadow plan



concept sections



Entrance Bathroom and the Dog's space Kitchen and the horse's stable Bedroom Livingroom Pool and sunset room

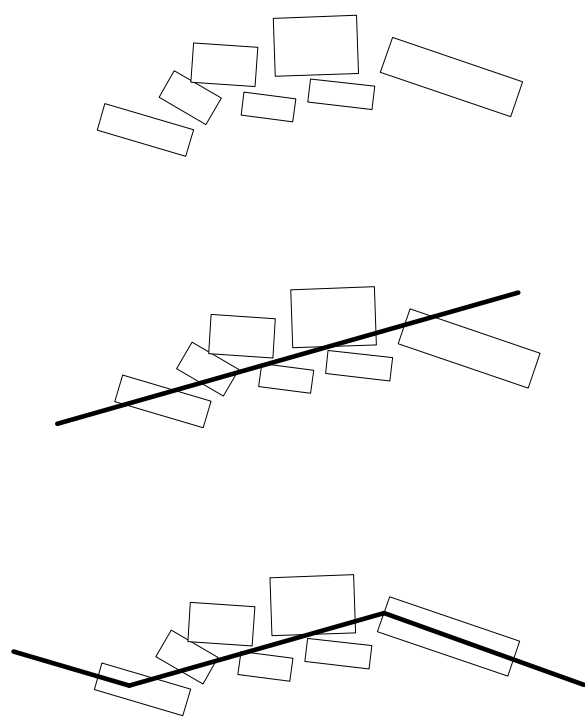


Warm reflecting materials for warm light within the house Sections next to the volumes to emphasis the sculpral forms and to provide daylight in the underground hallway. Perforated roof for shattered light and good acoustics.

Situation scale 1:200



concept floorplan



Floorplan scale 1:200 +1 first floor

Floorplan scale 1:200 Ground floor

