

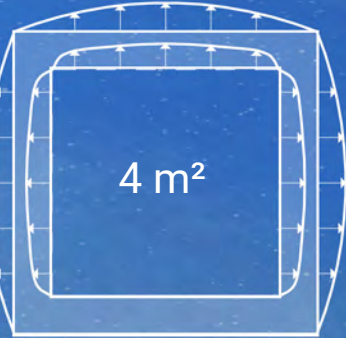
Berlin Bouncin' Techno Booth

MITTE - POTSDAMER PLATZ - ALEXANDERPLATZ
EAST SIDE GALLERY - KREUZBERG - AND MORE

One of the most prominent problems brought to us by covid is the lack of human touch and the capability of socializing. Therefore, using a way to interact with the people outside might be a fun way to implement a transition and provide a little bit of the experience of being in a techno club. With this thought in mind, this Bouncing Techno Booth dilates and retracts when we project and push our body into the rubbery walls.

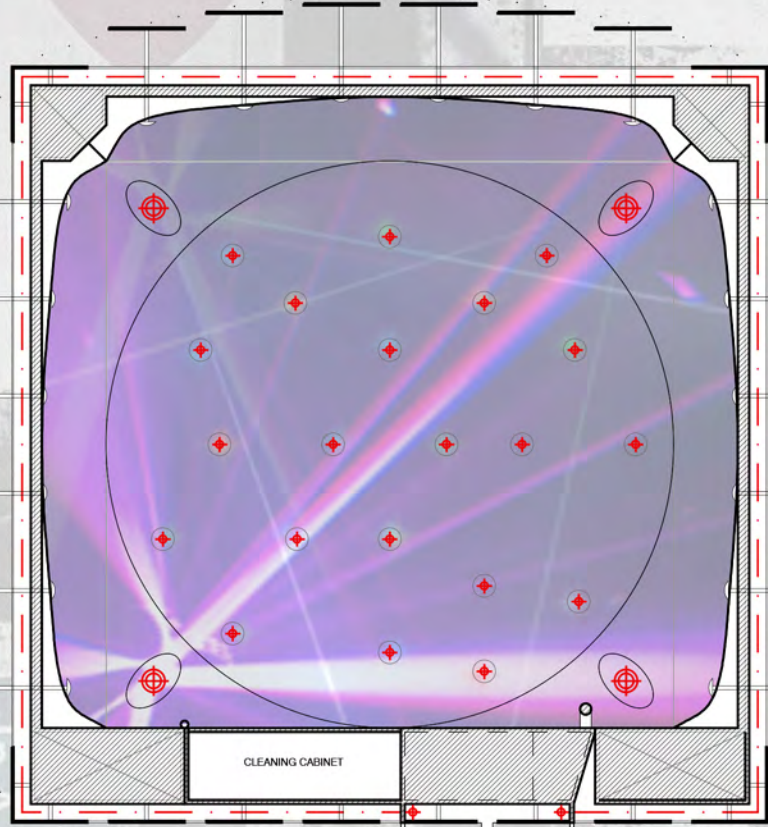
The bouncin' booth structure is made of recycled aluminum with a coverage of a thick plate of rubber made of recycled tires, in order to absorb the sound and the impact of the occupant bouncing around. The exterior is covered with quadrangular plates of recycled plastic connected to the interior membrane by aluminum tubes and clamped convex plates. The interior uses a thin rubbery membrane clamped with tiny reflective aluminum plates with a convex form. In the ceiling is located all the sound equipment as well the strobe illumination and projectors which light bounces around in the reflective surfaces of the walls and floor. In the door of the booth is located the disinfection and cleaning supplies as well as the main controllers of the techno booth.

On another note, due to the pulsating nature of this structure, it can be used as a living canvas to graffiti artists in Berlin.

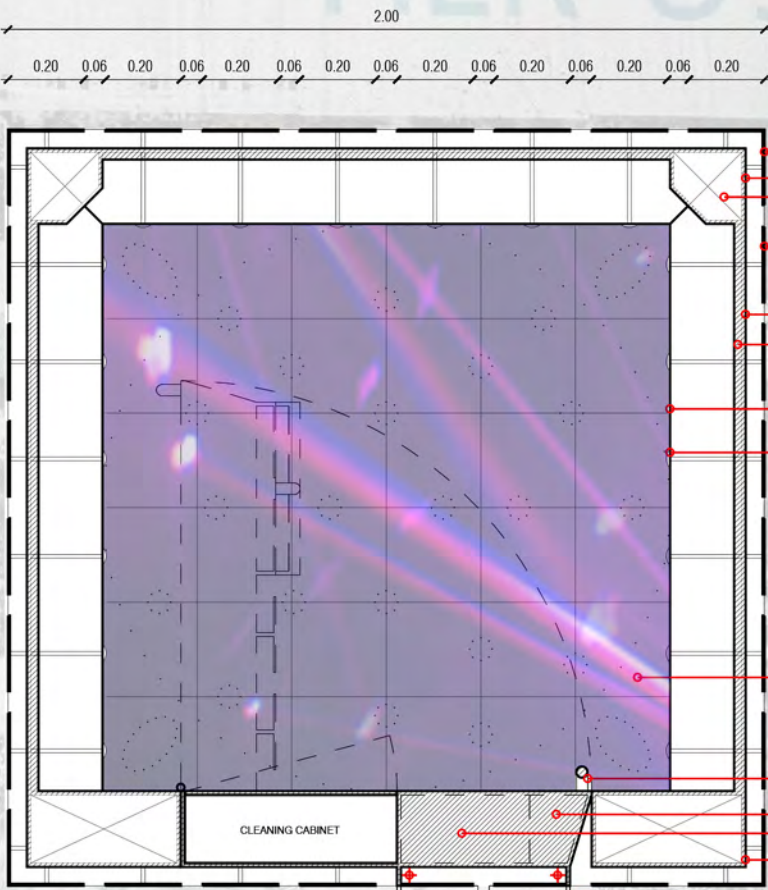


ILLUMINATION SCHEME

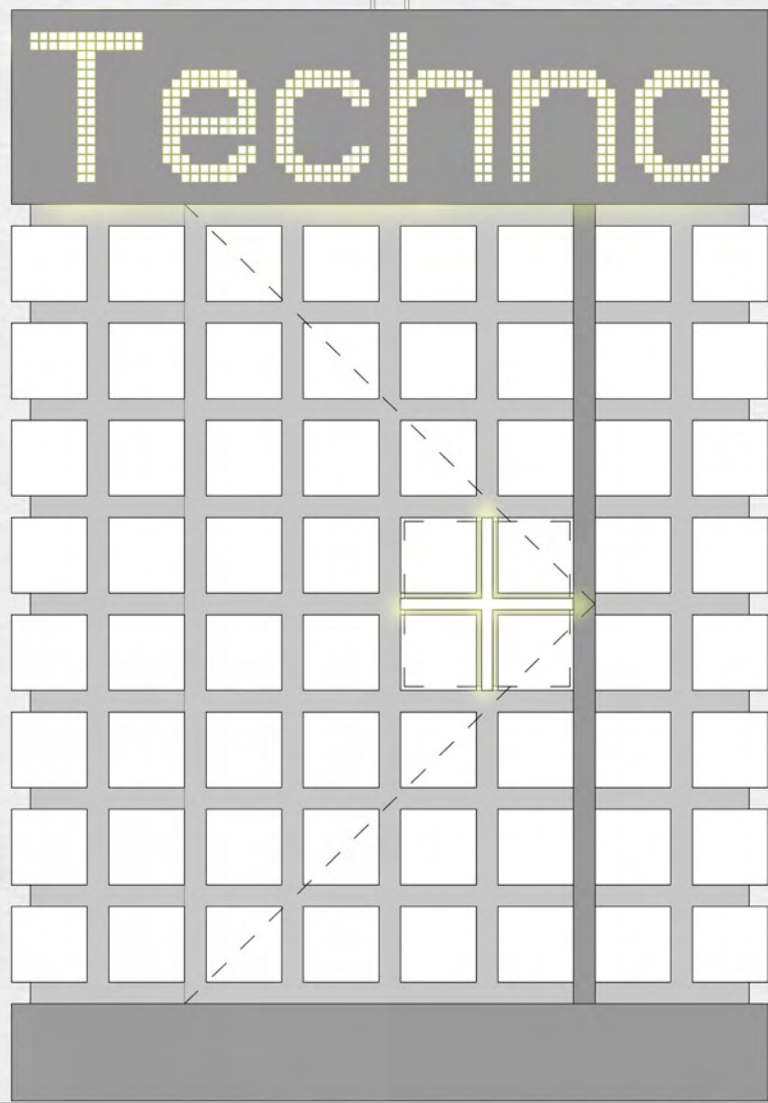
- RGB COLOR LED STRIP IP67
- EMBED MINI STROBE LIGHT
- RGB COLOR LED SPOTLIGHT



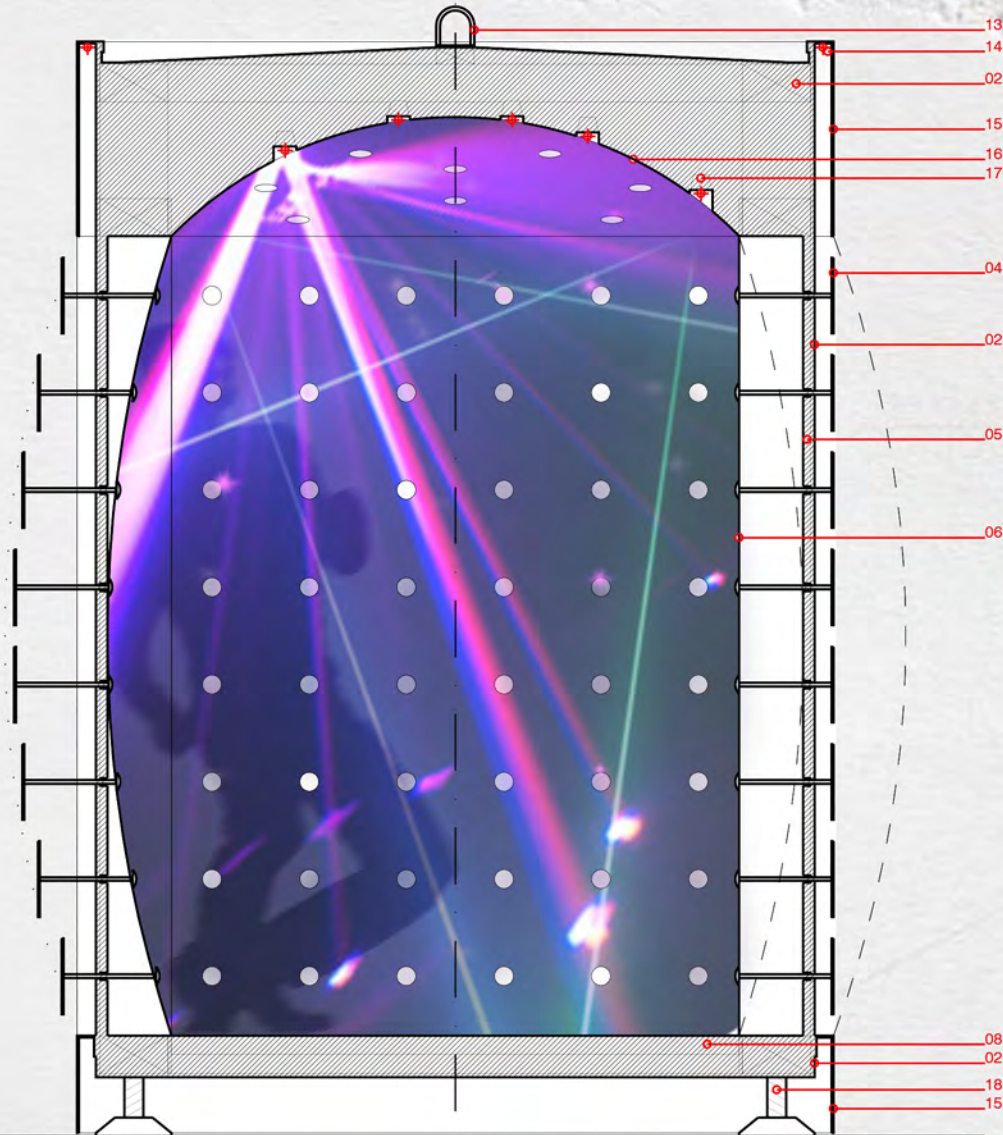
CEILING PLAN + ILLUMINATION SCHEME
1:20



PLAN
1:20



FRONT VIEW
1:20



SECTION
1:20

- 01. Corner panels in recycled plastic (5mm)
- 02. Structure in recycled Aluminum, painted black (10mm)
- 03. Technical and illumination passage, treated with acoustic membrane
- 04. Quadrangular panels in recycled plastic, painted in white (5mm)
- 05. Recycled rubber plate (20mm)
- 06. High resistance elastic membrane (1.5mm), reinforced for clamps fixation
- 07. Convex aluminum clamp polished and with fixations to the plastic panels
- 08. Floor in frosted tempered glass panels (20x20cm) applied in aluminum structure and acoustic panels
- 09. Door handle in vertical polished aluminum tube (30mm)

- 10. Magnetic lock installation
- 11. Illumination and sound control panel
- 12. Door handle in polished aluminum tube (30mm), cross design
- 13. Tow trailer
- 14. RGB colored LED strip (IP67)
- 15. Polished aluminum dome (1mm), with acoustic membrane sealant
- 16. High resistance elastic membrane (1.5mm), reinforced for clamps fixation
- 17. Music equipment (surround)
- 18. Adjustable high resistance steel feet